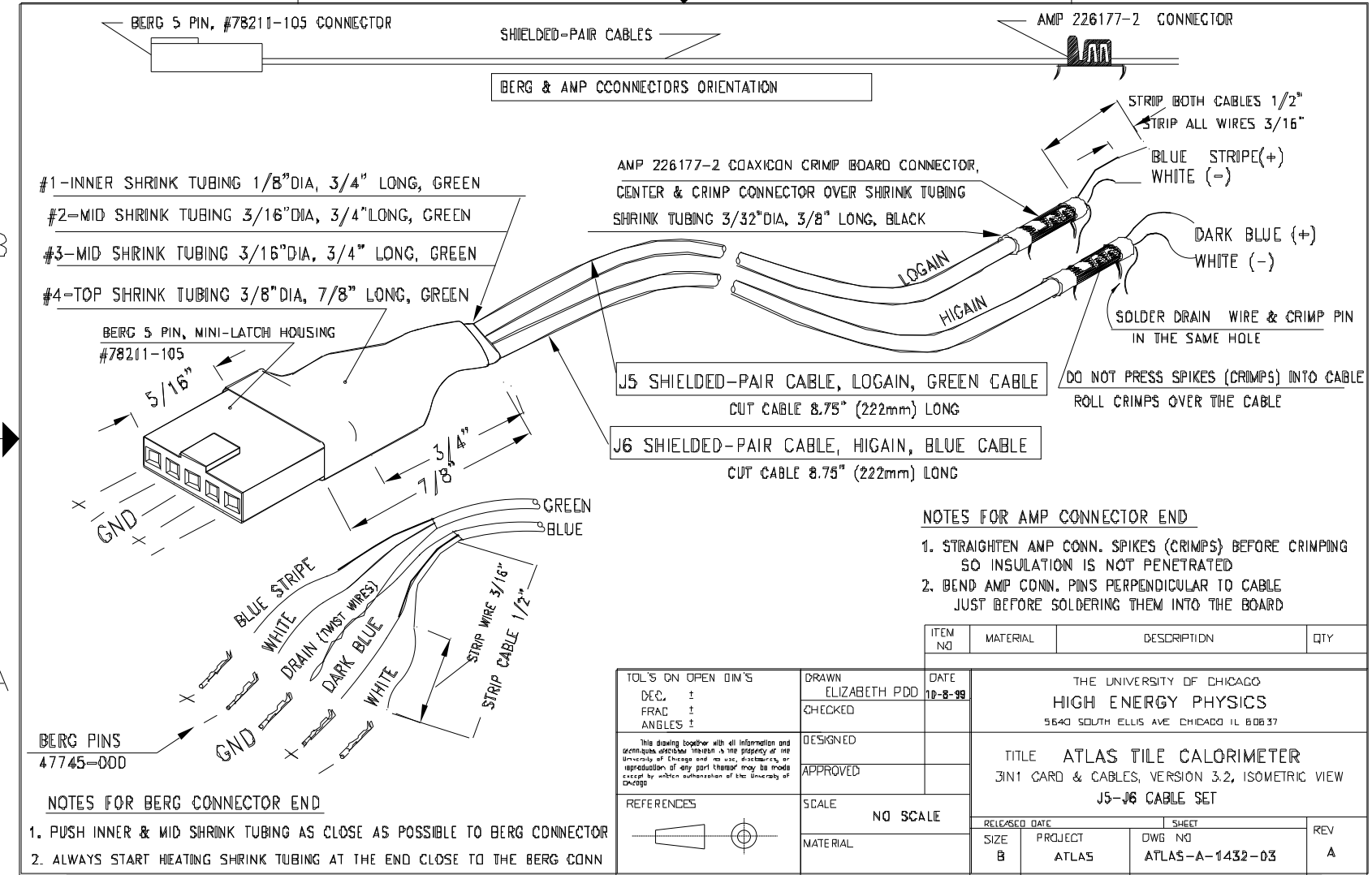
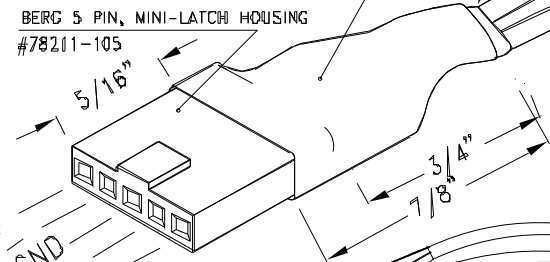


4 | 3 | 2 | 1



- #1-INNER SHRINK TUBING 1/8" DIA, 3/4" LONG, GREEN
- #2-MID SHRINK TUBING 3/16" DIA, 3/4" LONG, GREEN
- #3-MID SHRINK TUBING 3/16" DIA, 3/4" LONG, GREEN
- #4-TOP SHRINK TUBING 3/8" DIA, 7/8" LONG, GREEN



AMP 226177-2 COAXICON CRIMP BOARD CONNECTOR,
CENTER & CRIMP CONNECTOR OVER SHRINK TUBING
SHRINK TUBING 3/32" DIA, 3/8" LONG, BLACK

J5 SHIELDED-PAIR CABLE, LOGAIN, GREEN CABLE
CUT CABLE 8.75" (222mm) LONG

J6 SHIELDED-PAIR CABLE, HIGAIN, BLUE CABLE
CUT CABLE 8.75" (222mm) LONG

SOLDER DRAIN WIRE & CRIMP PIN
IN THE SAME HOLE

DO NOT PRESS SPIKES (CRIMPS) INTO CABLE
ROLL CRIMPS OVER THE CABLE

NOTES FOR AMP CONNECTOR END

1. STRAIGHTEN AMP CONN. SPIKES (CRIMPS) BEFORE CRIMPING SO INSULATION IS NOT PENETRATED
2. BEND AMP CONN. PINS PERPENDICULAR TO CABLE JUST BEFORE SOLDERING THEM INTO THE BOARD

ITEM NO	MATERIAL	DESCRIPTION	QTY
---------	----------	-------------	-----

TOL'S ON OPEN DIM'S DEC. ± FRAC ± ANGLES ±	DRAWN ELIZABETH PDD	DATE 10-8-99
This drawing together with all information and details described herein is the property of the University of Chicago and no use, distribution, or reproduction of any part thereof may be made except by written authorization of the University of Chicago.	DESIGNED	
	APPROVED	
REFERENCES	SCALE NO SCALE	
	MATERIAL	

THE UNIVERSITY OF CHICAGO HIGH ENERGY PHYSICS 5640 SOUTH ELLIS AVE CHICAGO IL 60637			
TITLE ATLAS TILE CALORIMETER JIN1 CARD & CABLES, VERSION 3.2, ISOMETRIC VIEW J5-J6 CABLE SET			
RELEASED DATE		SHEET	
SIZE B	PROJECT ATLAS	DWG NO ATLAS-A-1432-03	REV A

NOTES FOR BERG CONNECTOR END

1. PUSH INNER & MID SHRINK TUBING AS CLOSE AS POSSIBLE TO BERG CONNECTOR
2. ALWAYS START HEATING SHRINK TUBING AT THE END CLOSE TO THE BERG CONN

↑ 2 | 1